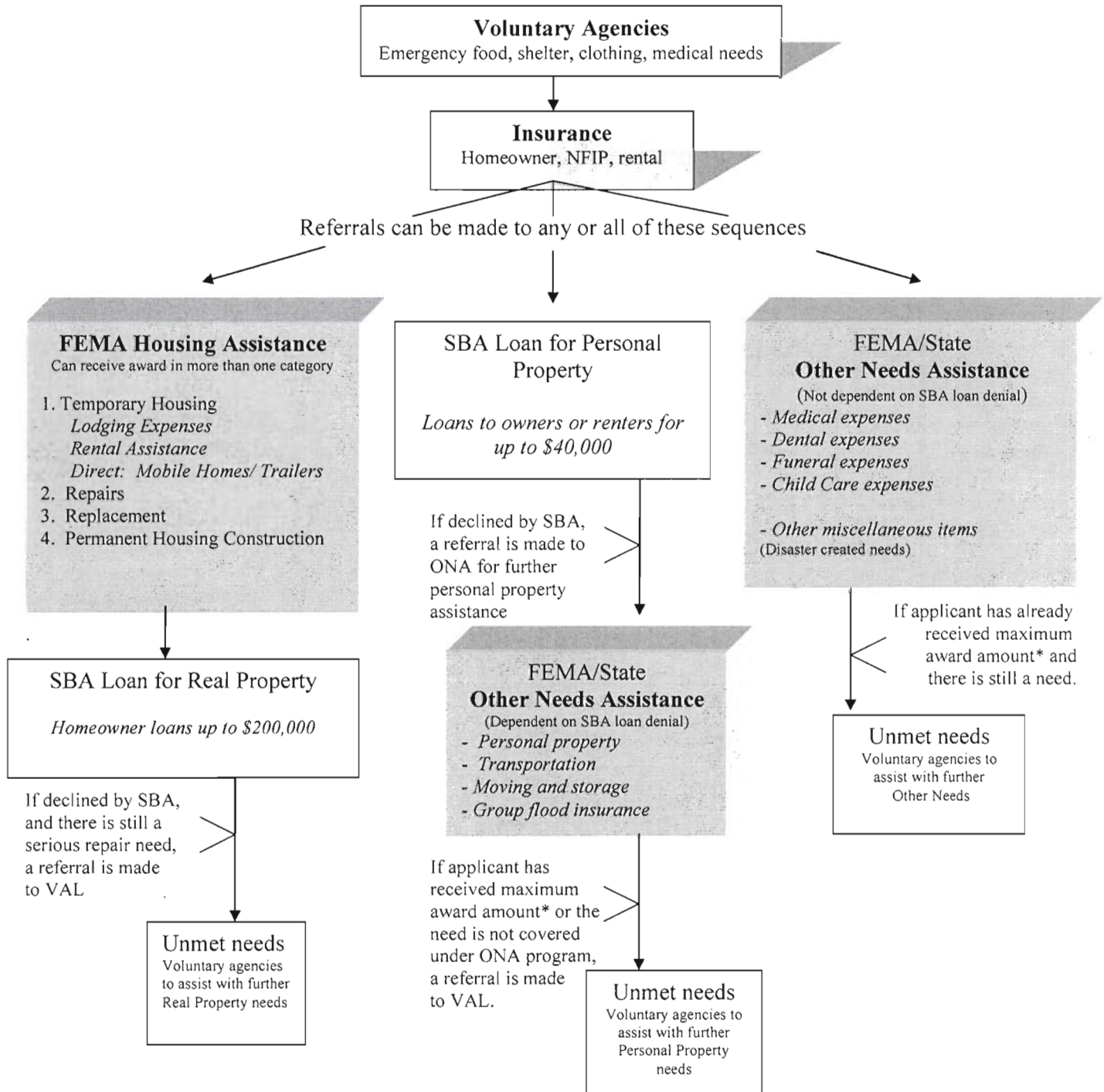


# FEMA Individuals and Households Program (IHP)

## SEQUENCE OF DELIVERY



October 1, 2013

**NOTE:** Eligibility is based on FEMA inspection conducted on damaged property. Max amount of Individuals and Households Assistance (IHP) is adjusted annually according to the CPI index. VAL = Voluntary Agency Liaison